

Gangpro-8xp Quick Start Guide

:

Installation:

Open unit from box, install the 9 pin serial RS-232 cable to your PC serial port, plug in the AC adaptor to wall outlet, and the 12 VDC output jack of adaptor to the power input jack in the back of the unit. Observer, the prompts displayed on the programmer LCD and all LEDs on module should blink and then go off.

Install Winlink-2 if you have the version 2.0 hardware (gray colored enclosure) or Winlink if you have the older black colored enclosure. The software should install on any of the windows operating system.

If you do not have a computer, you will not need to install Winlink-2 , as the unit is completely self-contained and stand alone and will not need a computer to operate it.

Insure you have the proper module installed. The unit is shipped pre installed with the DIP 32 module. If you have the PLCC or TSOP module and need to remove the DIP module, simple unscrew the two captive fasteners in front of the module remove the module and the cable attached to the module and replace it with the proper module , reconnecting the same cable to the new module and fastening back the module to the base.

For detailed instructions on the operation of the unit , and the software , use the Winlink-2 help screen as it more or less covers all materials ordinarily found in the user manual.

Basic Step-By-Step Operation:

There are three basic modes of operations:

A-Copy Devices, Stand Alone

B-Copy Devices from PC

C-Read Master and Save to File

In either of the cases above the, first step is to select the exact device type you need to operate on. You must know what your chip manufacturer is and what exact device mnemonic is scribed or screened on the device. You cannot use numbers printed on paper labels that is glued on the chip, those are internal part numbers created by the company that programmed the chip not by the company that made the chip!!!

Typically device mnemonics start with such numbers as 27, 28, 29, 39, 49 . For example 29F040 or 27C512 . If your chip number do not resemble these numbers you may be reading the date code or some serial number which will not be useful in selecting your device.

Insure that devices that you have are fully erase. If your devices have a quartz (glass looking) window, then they are UV erasable and must be erased using a UV fixture such as the Logical Devices Inc. Ultralite or T8/Z model erasers.

If your devices are flash type , then they may be erasable using erase command from the software or can simply be overwritten by new data. You must check the device specification supplied by the manufacturer (easily found by typing the device name in Google search engine and looking for a PDF file spec) to insure what technique you must use to erase the flash devices.

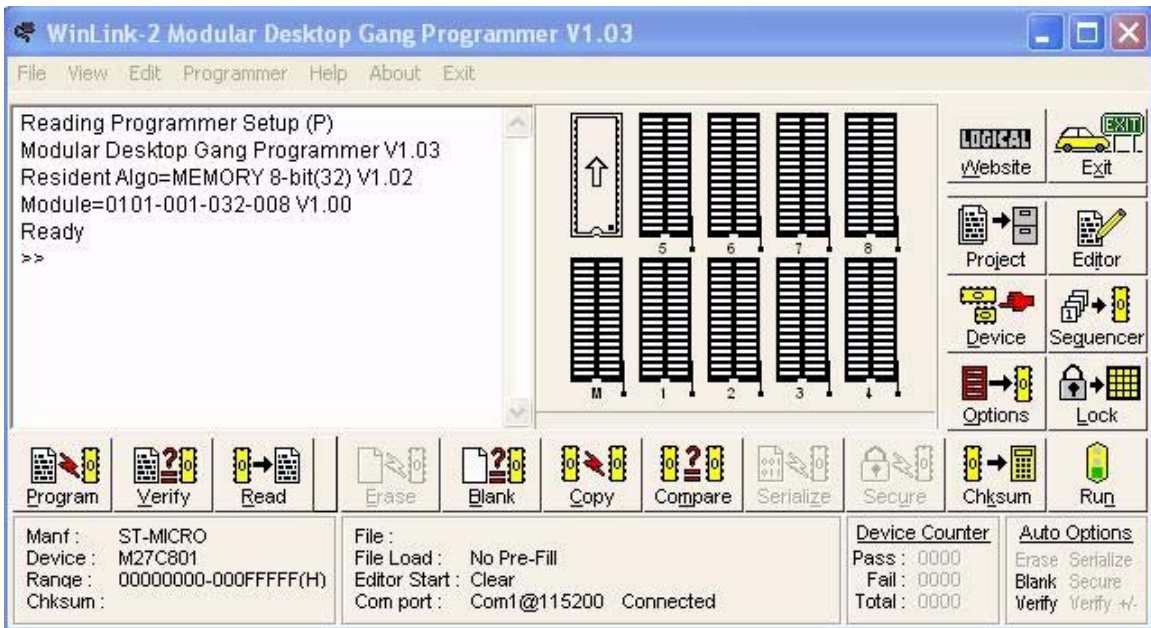
Most device purchased new (not surplus) , usually are supplied in the erased state.

A) Copy Devices Stand Alone

- 1- INSURE THE SERIAL CABLE IS DISCONNECTED FROM THE PROGRAMMER. YOU CANNOT OPERATE THE KEYPAD IF THERE IS LIVE CONNECTION TO THE PC.
- 2- IF THE DEVICE DISPLAYED ON THE LCD IS NOT THE CORRECT DEVICE, PUSH THE “DEVICE” KEY . LCD displays, Manufacturer Type, press the “ NEXT “ key to scroll through the manufacturer of devices.
- 3- Press the “ ENTER” key once you have found the right manufacturer and now scroll through the available devices by pressing the “NEXT” key and then press the “ ENTER” key to select the device.
- 4- LCD will display the device selected and the “>” prompt on the second line.
- 5- Insert the Master Device containing your data in the Master Socket. This is the socket closest to the Keypad, or lower left socket when you are facing the programmer from the front of the programmer. (The back is where the serial cable plugs in).
- 6- Insert your target devices, which must be the of the same type , in any of the 4 or 8 positions in any order, but with the right pin orientation. That is pin one should be towards you and the the back of the chip must be furthest from the ZIP handle or towards the back of the unit.
- 7- Simply press the “COPY” key and wait for the process to complete.

B) Program Devices From the PC

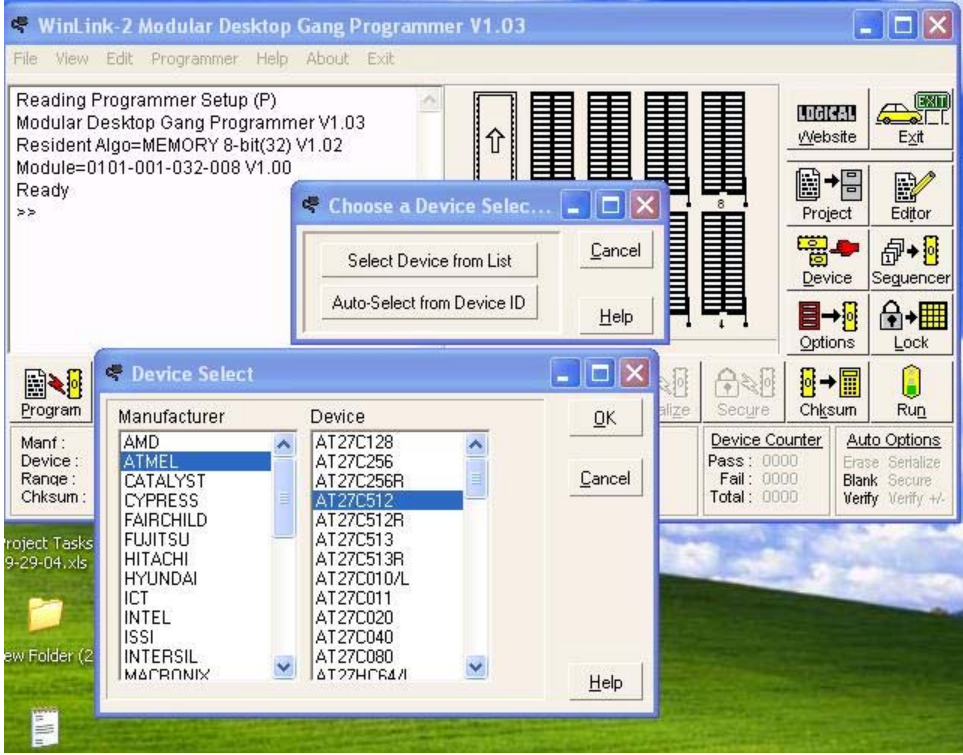
- 1- Insure that the serial Cable is connected to the PC.
- 2- Launch Winlink2 software.
- 3- You should have the following screen appear.:




+

Press the device key to the left to select your desired device.

You will first get the Select Device From List dialog box . Choose “Select the device from list” then, once you get the manufacturer list box select the manufacturer and the proper device on the right list box from that manufacturer and press the OK key.




Next you need to select the data file you need to program on your devices. Select the “File” drop down menu , followed by “ Load Data File” . You must now load the master file which is stored in any of the allowed standard file formats. The Intel Hex is the most common format. This format if viewed in a text editor generally starts with a “ :” in the beginning of each line.

Once your file is loaded, you can view it by pressing the “Editor”  button on the right, however this is not a required step and you can skip it for now.

Blank Check:

To insure all your device are erased , press the Blank button below the text window of the

Winlink2 software. 

If any device is non blank, the socket picture on the graphical display will turn red ,and the socket LED on the module will blink red. All the passed devices will be show as green sockets on the PC display.

Programming Phase;

Now you are ready to program you devices. All you have to do is press the “Program”

Button. 

Note that the Copy button does the same thing, except it is used when you program from a master chip in the master socket and not from the buffer loaded from your hex file.

Again the failures are noted by display of red sockets on the PC screen and blinking LED on the module.

C) Read Master

Often times , you have your original data on a chip and you would like to store it in a file as to safeguard your master chip. If this is your only device , it is best to create more masters from the original one or just program from the file. Never use your last device as a working copy in production.

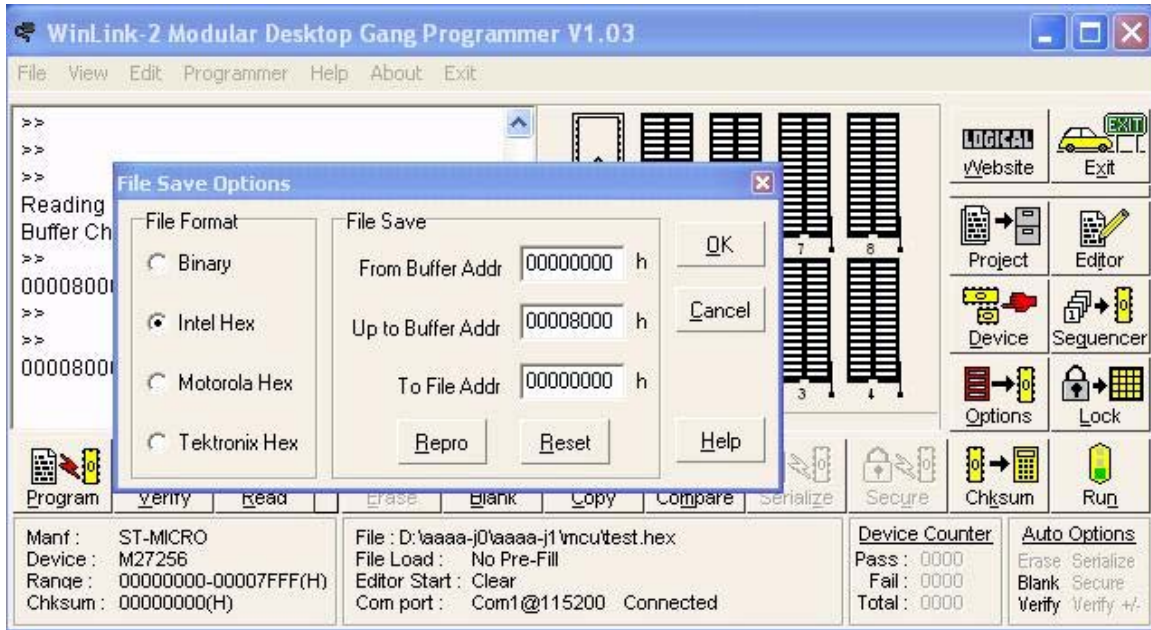
To read and existing programmed chip , simply insert the device properly in the Master Socket , and select the proper device as before.

Now just presss the “ Read “ button on bottom of the text window of Winkink-2



The data will be loaded into the PC buffer from the chip. The socket picture will turn yellow during any operation. Once data is loaded, you will now need to save the data from the PC buffer into your desired directory.

Go to “ File” pull down menu and select “ Save Data File” . You will get the file format menu. Select the proper format and file name you desire to save the data. Select Intel Hex if you are not sure which format you would like. This is the most popular format and can be read by just about any programmer.



Do not worry about the information on the right. This is if you wanted to change the offsets of data addresses and would rarely need to change this unless you were using this product in engineering mode and had a good reason for the change.

You have now completed the basis step of programming. If you need further assistance , send us an email at support@logicaldevices.com

Please note that there are many more feature to Winlink-2, such as setting up projects and macros. You can configure Winlink-2 to automatically select the files and devices you need for each project and operate the unit with a simple “ Run “ button. If you need instructions of how to do this email us to the address above.

Also please note that we can custom design any front end software to suite your production environment . This is done based on engineering software time and we can easily send you a quote . Email us either at the above email address or sales@logicaldevices.com The cost of such software , is less than generally perceived as we may already have similar features created from our other customers. For example we have currently configured Winlink-2 to read from an Excel spreadsheet the customer desired parameters.

We can also custom make any programming head for your application . The current programming heads in production are:

- DIP / 32 8 socket head ;Now
- PLCC 32/32 8 socket head; Now
- Serial PROM 17Cxx, 25Cxx DIP socket head; Now
- Motorola Micro 68HCxx 8 socket 44 pin PLCC head. Now
- 48 /42/40 Pin EPROM , 8 socket DIP head ; Dec 04
- 44 Pin PLCC EPROM (16 bit) 8 socket head ; Dec 04
- MicroChip Micro PIC programming head ; Dec 04

Logical Devices Inc.

PO box 8400 , Denver, Colorado 80201

www.logicaldevices.com

Tel: 303 861-8200

Fax:303-813-9019