



Windows 7/8/10 / Vista Manual Driver Installation 32 bit and 64 Bit

DO NOT PLUG IN HARDWARE BEFORE INSTALLING SOFTWARE

AFTER SOFTWARE IS INSTALLED , GO TO DEVICE MANAGER AND MANUALLY POINT USB DEVICE DRIVER TO THE FOLLOWING DIRECTORIES ON YOUR PC:

FOR 64 BIT SYSTEM , POINT TO C:WEILEI\WELLON\USBSYS64

FOR 32 BIT SYSTEM POINT TO C:WEILEI\WELLON\USBSYS

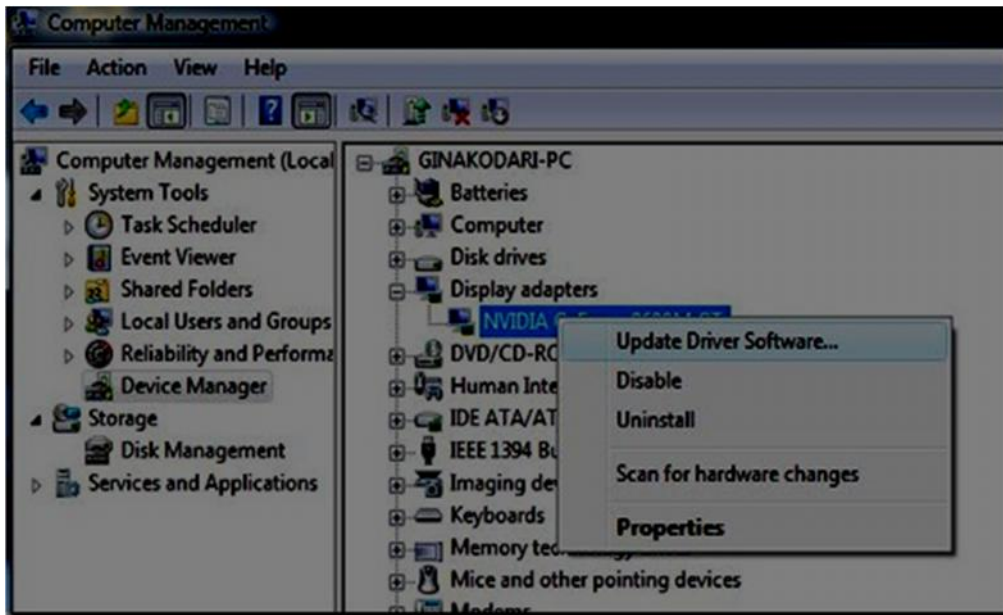
Normally the drivers for your Needham's chip programmer will be installed automatically upon installation of the Needhams/Wellon programming software.

Some systems however may require a manual driver installation, by follow the steps below:

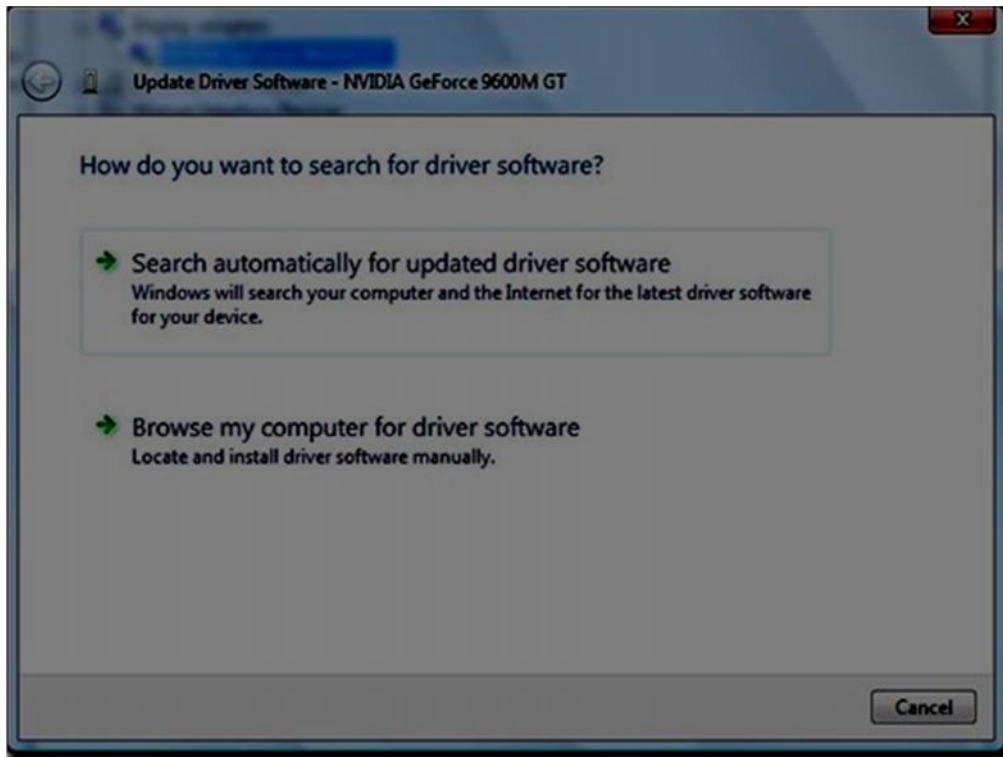
1. Attach your Needhams programmer to your computer's USB port.
2. Go to Start and right-click on Computers and select Manage. This will bring the Computer Management window, now on the left sidebar select Device Manager as shown in the screenshot below.



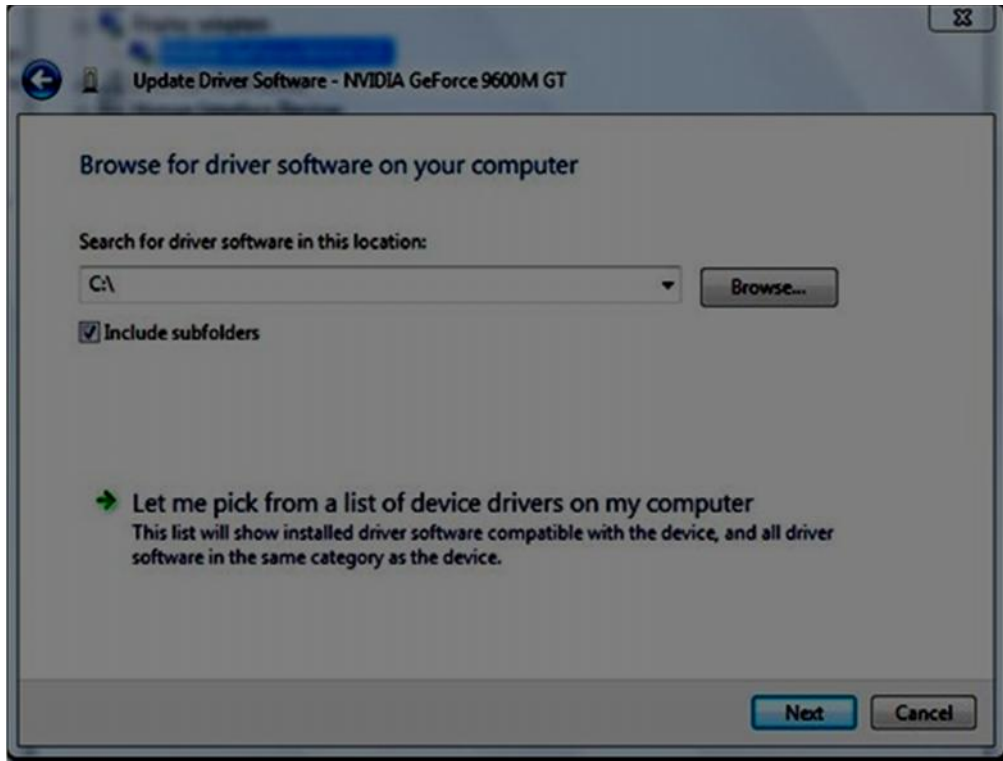
3. Now, select the device driver you want to update. If Windows was unable to correctly install the driver, it will most likely be showing up in the device manager as "Unknown Device" with a yellow exclamation point icon.



Once you are done. It will open a windows like the one shown below.



4. You have two options here. Select Browse my computer for driver software. It will then open a window similar like the one shown below,



5. Click Browse and locate your driver.

For 32-bit drivers, the default location will be:

C:\weilei\wellon\usbsys

For 64-bit drivers, the default location will be:

C:\weilei\wellon\usbsys64

6. Click Next and Windows 7 / Vista will start installing the driver.

Afterwards, your driver should be correctly installed and be ready for use with your device.